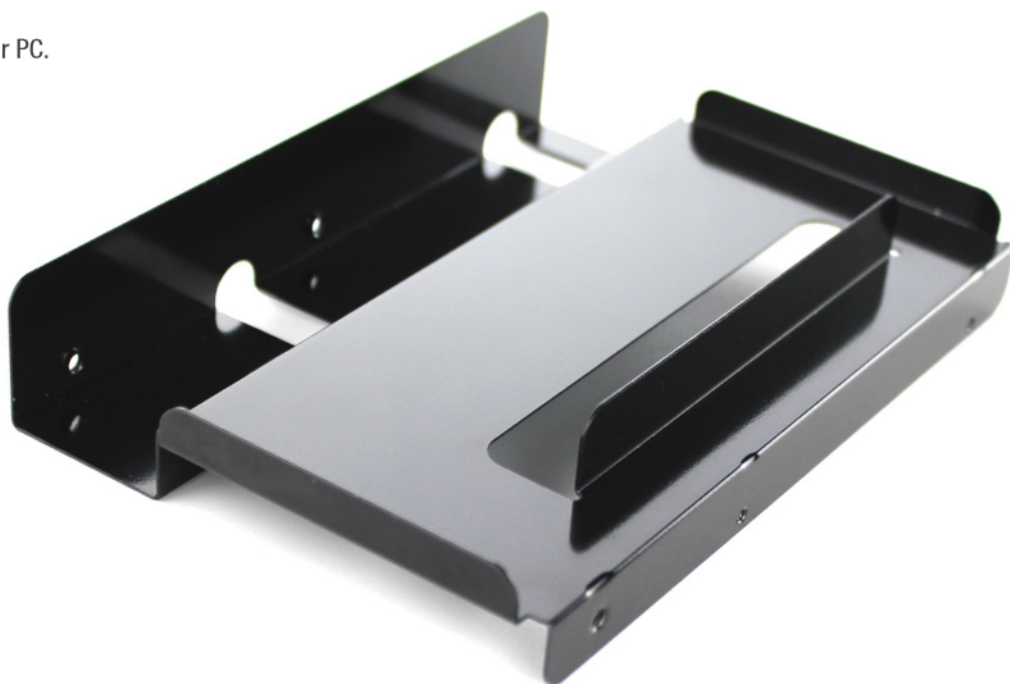


## FANTEC QB-BRACKET 25

2.5" to 3.5" adapter for the installation of an SSD or 2.5" HDD

The QB-Bracket 25 is a practical 2.5 to 3.5 inch adapter for the installation of an SSD or 2.5" HDD. It is suitable for all products of the FANTEC QB series. And can even be screwed directly into your PC.



## Technical Details

### EQUIPMENT

- 2.5" adapter for SSD/HDD to 3.5"
- Not suitable for hard disks with height 15mm
- 100gr
- 143mm x 100mm x 30mm

143 x 100 x 30mm

### SUITABLE FOR

- All FANTEC QB cases, e.g.
- FANTEC QB-X2U31R (2133)
- FANTEC QB-35US3-6G (1695)
- FANTEC QB-35U31R (2124)
- FANTEC QB-X8U31 (2180)
- Even directly in the PC

### DIMENSIONS (PRODUCT)

- 143 x 100 x 30mm (W x D x H)
- Net weight ~ 0.1kg per piece

### LOGISTIC DETAILS

- Dimensions Retailbox:  
(250 x 30 x 170mm - B x T x H)
- Packaging unit dimensions:  
(500 x 258 x 363mm - B x T x H)
- Gross weight with Retailbox:  
~0.126kg per Retailbox
- Packaging unit:  
40 Piece per carton
- Total weight carton:  
6kg
- Country of origin:  
Taiwan